



COVID-19 Moving to ALERT LEVEL 2 - 14 MAY 2020

Kiaora, Malo e lelei, Talofa lava, Bula, Mabuhay, Annyeong, Ni hao,
Greetings to you all.

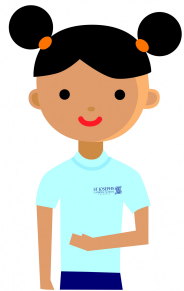
"Keep us, good Lord, under the shadow of your mercy in this time of uncertainty and distress. Sustain and support the anxious and fearful, and lift up all who are brought low; that we may rejoice in your comfort knowing that nothing can separate us from your love in Christ Jesus our Lord.
Amen"

Moving to ALERT LEVEL 2 - Students returning

We are looking forward to welcoming our tamariki back to school on Monday.

The purpose of this newsletter is to provide you with information to ensure a smooth reopening.

CHILDREN AND COVID-19



'Our experience in New Zealand and overseas with COVID-19 over the last four months shows that it does not infect or affect children and teens in the same way it does adults.

So children and teens have low infection rates, they don't become that unwell if they do get infected, and they don't tend to pass the virus on to adults.'

Dr Caroline McElhay
Director, Public Health, Ministry of Health

REOPENING ON 18 MAY

The Prime Ministers announcement that we will be reopening schools on Monday the 18th was welcome news. I thank you all for your ongoing support of our school and your children during these unprecedented times.

We are delighted to welcome ALL students back on site - the exceptions to this are those with comprised immunity or those at higher risk if they contract Covid 19 as well as those who have a cold or the flu.

RETURNING TO SCHOOL REGISTER

To assist with preparations for welcoming your children back to the St Joseph's Catholic School next Monday 18 May, we ask that you complete this survey enquiring after: Whether your son or daughter is set to return to school on Monday, and their wellbeing. Please submit your response by 8pm, Friday 15 May.



<https://www.surveymonkey.com/r/YXXQT7Z>



SUPPORT

This is a challenging time for many families – high stress levels, children at home, cut off from family and friends.

If you or anyone you know wants some advice or support over this time here are some options that might be useful.

Support services that remain open:

Womens Refuge 0800REFUGE

Shine 0508 744 633

Alcohol and Drug Helpline 0800 787 797

Oranga Tamariki call centre 0508FAMILY

CADS 09 845 1818

Narcotics Anonymous 0800 628 632

Alcoholics Anonymous 0800 229 6757

Lifeline 0800 543 354 or free text 4357

Youthline 0800 376 633

Samaritans 0800 726 666

Outline (LGBT) 0800 688 5463

Depression Helpline 0800 111 757

Suicide Prevention Helpline 0508 828 865

Work and Income services centres are closed, however you can apply for assistance via MyMSD or phone the contact centre on 0800 559 009.

LEARNING SUPPORT

St Joseph's Catholic School's SENCO Valerie Anderson has a key role in identifying and coordinating responses to our students' learning support needs as they return to school.

Additional wellbeing support will be shared on our school website and our Facebook page.

If you have any concerns about your child's return to school and supports that may be needed please contact Valerie.
vanderson@sjs.school.nz.



Level 2 procedures and protocols

Our procedures at Alert level 2 have been developed with the safety of staff and students in mind. At all times we have followed the most up to date advice from the Ministry of Education and the Ministry of Health.

The Key Principles @ ALERT LEVEL 2

- Reduce the risk of someone getting infected in the first place
- Ensure we can identify and contact anyone who becomes infected
- Understand that Level 2 is not business as usual



<https://youtu.be/5pAdLm4R8d4>

HYGIENE

Hand sanitiser is provided for every classroom - Students and staff will use this as they enter or exit the room

Additional cleaning of hard surfaces and toilets will be done at regular intervals during the day.

Drinking fountains will be turned off, children are to bring a drink bottle.

Sharing of equipment is not encouraged - students may bring their own pencil cases if they want.

ANY STAFF AND STUDENTS THAT BECOME UNWELL DURING THE DAY WILL BE SENT HOME

IF YOUR CHILD IS SICK - STAY HOME

ADULTS ONSITE

You will see from the video above that adults are not encouraged to come onsite. However; we understand that for some of our junior students particularly this may increase anxiety. If you do need to bring your child into school please maintain SOCIAL DISTANCING and sign the register at your child's class.

AFTER SCHOOL

A walking school bus will gather on the turf after school and 2 teachers will lead students to the church park.

Any child not collected from the church carpark by 3.10 will be bought back to school for their safety.

SJS LUNCHROOM

OPEN

The Lunch room is operating at Alert Level 2.

All food safety standards are being strictly followed.

084

The school bus is operating at Alert level 2

Handsantizer will be available on entry

A register will be kept by the school

